



# MONTHLY MEMBERSHIP PROGRESS REPORT

District 11 D1

Results as of: 6/30/2017

GMT: OPEN

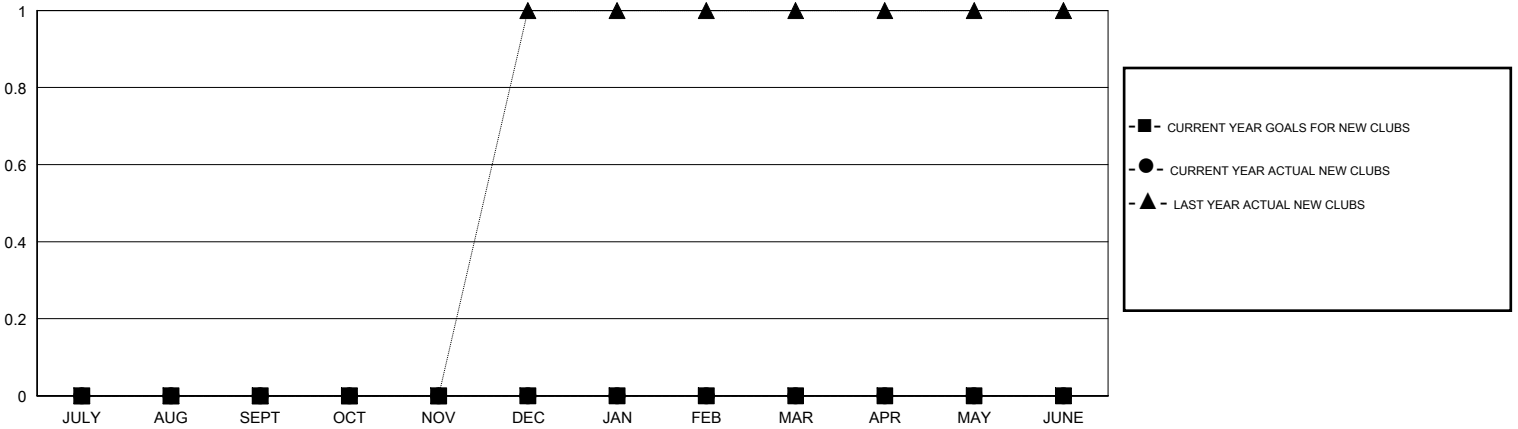
LOCATION MICHIGAN

GMT CA

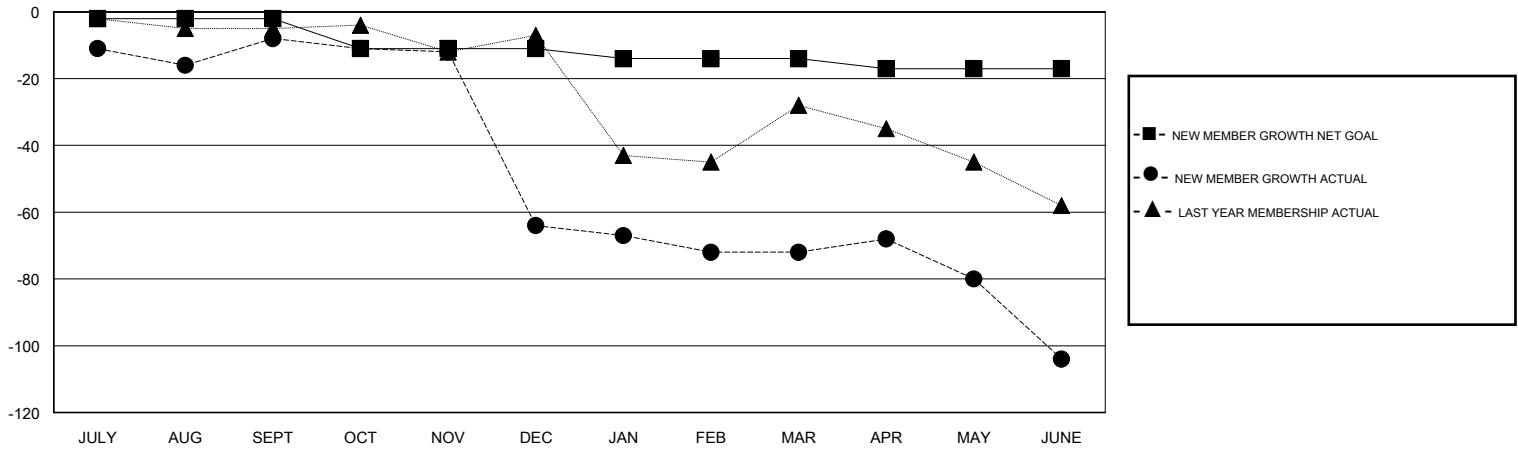
Clubs			
RESULTS FOR 2016-2017			
QUARTER	NEW CLUB GOAL	NEW CLUBS	DROPPED CLUBS
JULY/AUG/SEPT	0	0	0
OCT/NOV/DEC	0	0	0
JAN/FEB/MAR	0	0	1
APR/MAY/JUNE	0	0	0

Members			
RESULTS FOR 2016-2017			
QUARTER	NEW MEMBER GROWTH NET GOAL (not reinstated or transfers)	NEW MEMBER GROWTH ACTUAL (not reinstated or transfers)	DROPPED MEMBERS ACTUAL (including transfers)
JULY/AUG/SEPT	-2	16	24
OCT/NOV/DEC	-9	20	76
JAN/FEB/MAR	-3	16	24
APR/MAY/JUNE	-3	18	50

GOALS AND ACTUAL NEW CLUBS CUMULATIVE



GOALS AND ACTUAL MEMBERS CUMULATIVE



DROPPED CLUBS: 1	28 CLUBS OF 39 ADDED 1 OR MORE NEW MEMBERS	<u>GENDER DISTRIBUTION</u>
		MALE 842 (73.22%)
		FEMALE 308 (26.78%)
<u>DROPPED MEMBERS</u>	<a href="#">CLICK HERE FOR CUMULATIVE MEMBERSHIP DATA</a>	TOTAL FAMILY UNIT MEMBERS 271
DECEASED 27		FAMILY MEMBERS PAYING HALF DUES 138
CLUB CANCELLED 0		
OTHER 147		
<b>TOTAL 174</b>		